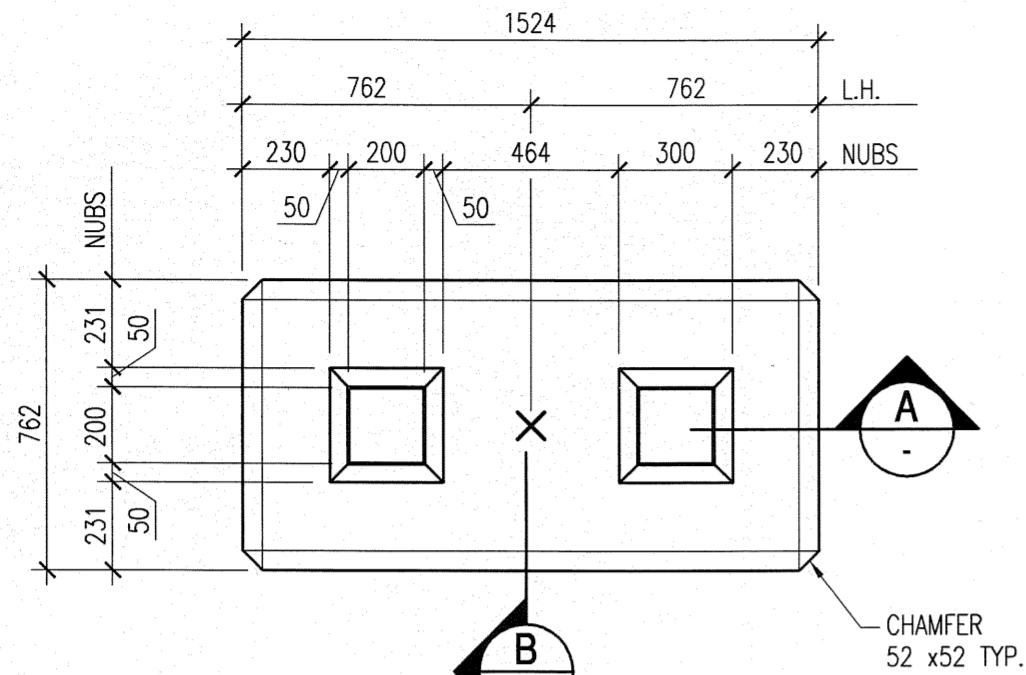
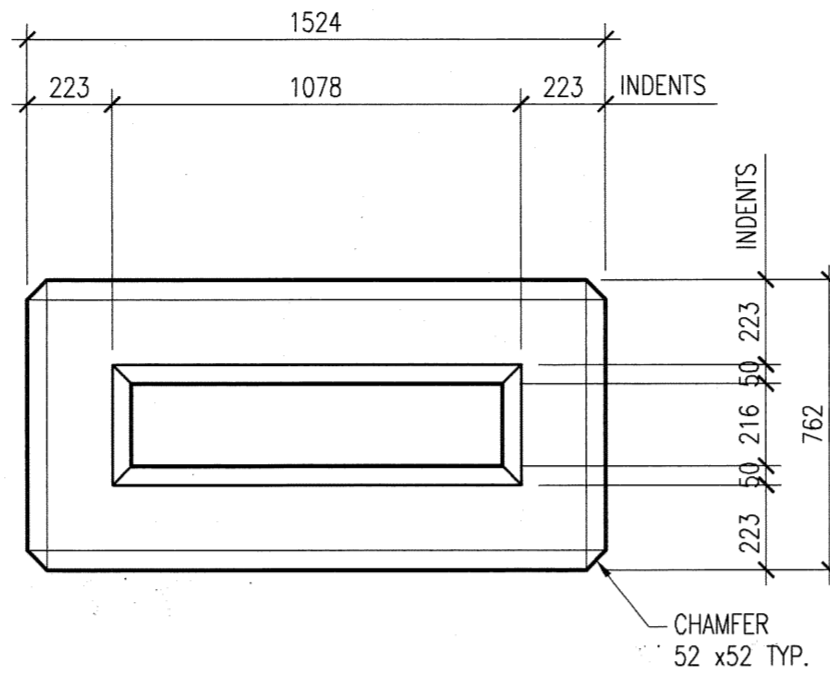


3/8"Ø AIRCRAFT CABLE  
 CUT LENGTH = 2500  
 TOTAL REQUIRED = 1  
 TOTAL LENGTH = 2.5m

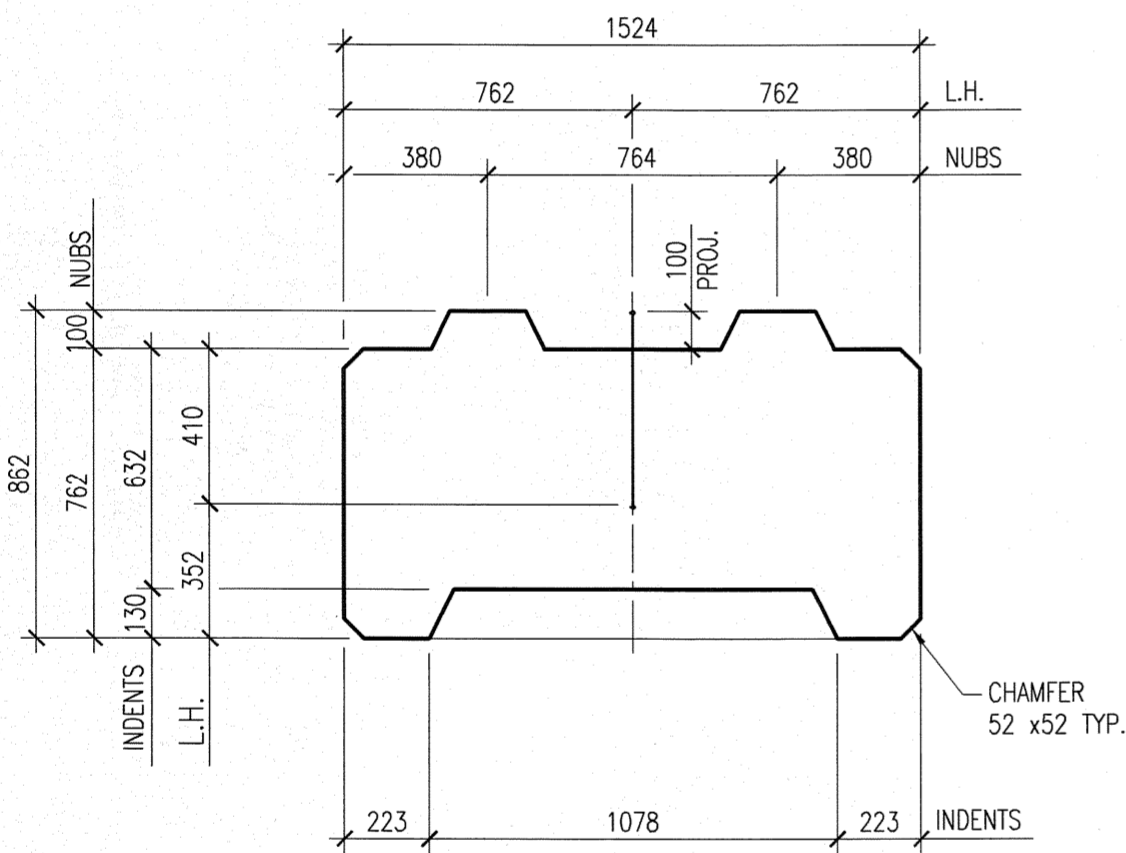
**LIFT HOOK DETAIL**



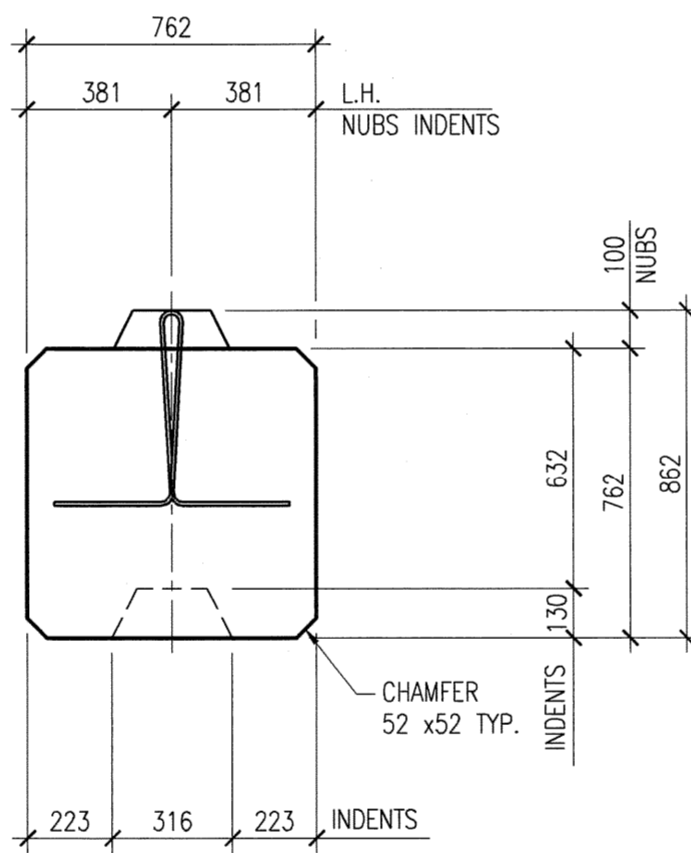
**TOP VIEW**  
 SCALE: 1:20



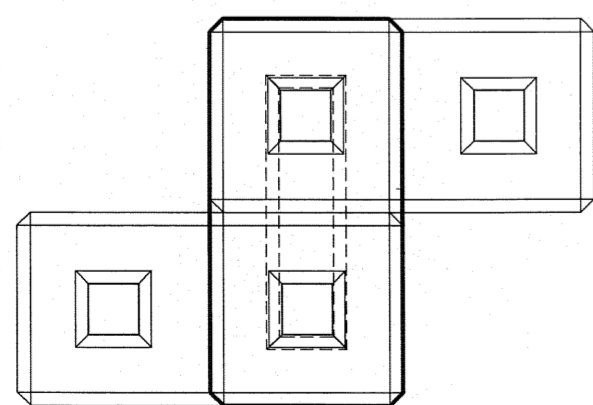
**BOTTOM VIEW**  
 SCALE: 1:20



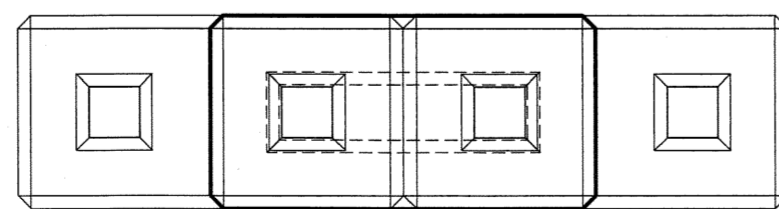
**A SECTION**  
 SCALE: 1:20



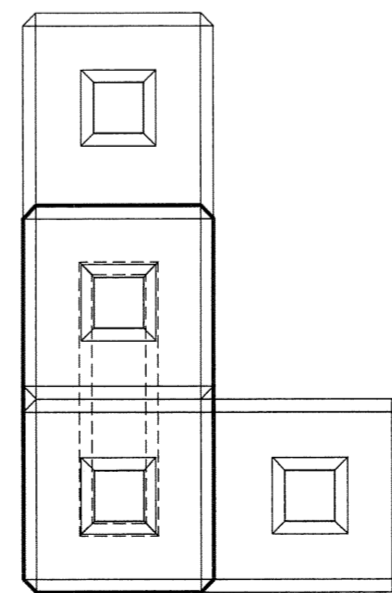
**B SECTION**  
 SCALE: 1:20



**CONFIG. '1'**  
 SCALE: 1:20



**CONFIG. '2'**  
 SCALE: 1:20



**CONFIG. '3'**  
 SCALE: 1:20

SEE ATTACHED REINFORCING SCHEDULE(S) FOR ALL REINFORCING BAR SHAPES, SIZES AND QUANTITIES.

UNLESS NOTED OTHERWISE ALL TOLERANCES = CSA A23.4-09 (CL.12)

MARK No.	QUANTITY	LENGTH (mm)		VOLUME (m <sup>3</sup> )		MASS (kg)
		AREA (m <sup>2</sup> )	FACE	BACK		
<b>LOCK BLK-01</b>	TO BE DETERMINED	1.2	-	-	0.88	2115

CONCRETE DATA		WPG. MIX DESIGN NO.	85	LIFT HOOK	
CEMENT TYPE:	GU	AIR ENTRAINMENT:	6.5% ± 1.5	STRAND LIFT HOOK	
RELEASE STR. (MIN.):	20 MPa	MAX. AGGREGATE:	14mm	DIAMETER:	3/8" Ø
28 DAY STR (MIN.):	40 MPa	MAX. W/C RATIO:	0.33	LENGTH:	2.5 m

MARK #	QTY./UNIT	MARK #	QTY./UNIT	MARK #	QTY./UNIT	MARK #	QTY./UNIT	MARK #	QTY./UNIT
-	-								

STOCK ITEMS	
QTY./UNIT	DESCRIPTION
-	-

A	RELEASED FOR APPROVAL	JR	2013.07.23
REV.	DESCRIPTION	BY	DATE



**IMPERIAL LOCK BLOCK**

BRADY ROAD RESOURCE  
 MANAGEMENT FACILITY



**armtec**

DRAWN BY	JR	ENG. REVIEW		CHECKED BY	<i>[Signature]</i>	DATE	2013.07.22
----------	----	-------------	--	------------	--------------------	------	------------

SAP No.		DWG. No.	<b>LOCK BLK-01</b>	REV	<b>0</b>
---------	--	----------	--------------------	-----	----------